

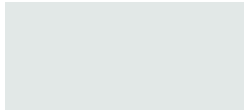


41 North Lawn Avenue
Elmsford, NY 10523
914-347-8157
www.tsmny.com

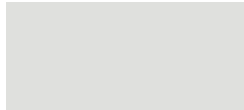
Our Shop is Your Shop!

Architectural
Core Colors

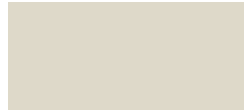
Core Colors



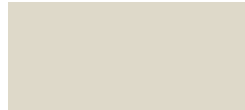
Regal White[□]
SR: .68 IE: .86 SRI: 82



Bone White[□]
SR: .72 IE: .84 SRI: 87



Almond[△]
SR: .63 IE: .86 SRI: 75



Sandstone[△]
SR: .54 IE: .86 SRI: 63



Surrey Beige[△]
SR: .40 IE: .86 SRI: 43



Sierra Tan
SR: .35 IE: .86 SRI: 37



Medium Bronze
SR: .30 IE: .87 SRI: 31



Mansard Brown
SR: .29 IE: .86 SRI: 29



Dark Bronze
SR: .26 IE: .84 SRI: 24



Extra Dark Bronze*
SR: .05 IE: .89 SRI: N/A



Patina Green
SR: .29 IE: .87 SRI: 29



Hemlock Green
SR: .28 IE: .87 SRI: 28



Classic Green
SR: .26 IE: .84 SRI: 24



Hartford Green*
SR: .10 IE: .82 SRI: 2



Teal
SR: .28 IE: .87 SRI: 28



Slate Blue
SR: .26 IE: .85 SRI: 24



Regal Blue
SR: .28 IE: .86 SRI: 27



Terra Cotta
SR: .34 IE: .87 SRI: 36



Banner Red
SR: .42 IE: .84 SRI: 45



Colonial Red
SR: .34 IE: .86 SRI: 35



Brandywine
SR: .26 IE: .85 SRI: 24



Dove Grey
SR: .49 IE: .87 SRI: 56



Slate Gray[△]
SR: .37 IE: .86 SRI: 39

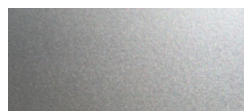


Charcoal
SR: .32 IE: .85 SRI: 32

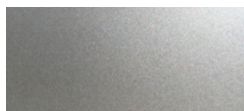


Matte Black
SR: .27 IE: .86 SRI: 26

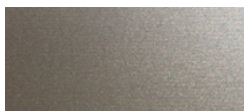
Mica Colors**



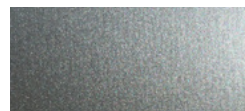
Bright Silver[△]S66
SR: .60 IE: .77 SRI: 68



Silversmith[△]S15
SR: .53 IE: .78 SRI: 59



Champagne S20
SR: .37 IE: .83 SRI: 38



Pewter S11
SR: .36 IE: .85 SRI: 38

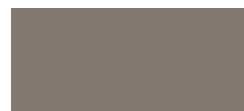


Bright Copper[△]S25
SR: .49 IE: .85 SRI: 55

26 Gauge Low Gloss



Sierra Tan
SR: .46 IE: .87 SRI: 52



Slate Gray
SR: .37 IE: .86 SRI: 39



Medium Bronze
SR: .30 IE: .86 SRI: 30



Dark Bronze
SR: .28 IE: .86 SRI: 27



Colonial Red
SR: .31 IE: .86 SRI: 31



Classic Green
SR: .31 IE: .87 SRI: 32



Hartford Green
SR: .08 IE: .89 SRI: 3



Slate Blue
SR: .30 IE: .87 SRI: 31



Matte Black
SR: .26 IE: .86 SRI: 25

Acrylic Coated Galvalume
also available
(not pictured)

SR = Solar Reflectivity IE = Initial Emissivity SRI = Solar Reflective Index

** Featuring a pearlescent mica finish; subject to premium pricing.

Colors shown are as close to actual colors as allowed by the printing process. Actual metal samples are available. Colors may appear different when viewed at different angles and under different lighting conditions. Due to product improvements, changes and other factors, we reserve the right to change or delete information herein without prior notice.



*All Standard Stocked colors are ENERGY STAR® approved except Hartford Green, Extra Dark Bronze

□ LEED® compliant for low slope and steep slope

△ LEED® compliant for steep slope only

ARCHITECTURAL PVDF				STEEL				ALUMINUM			
FABRAL COLOR	SR	IE	SRI	26GA.†	24GA.†	22GA.‡	18GA.‡	.032"†	.040"†	.050"†	.063"†
Regal White	.68	.86	82		●■▲◆	●	●	●■			●
Bone White	.72	.84	87		●	●	●	●	●	●	
Almond	.63	.86	75		●			●	●	●	
Sandstone	.54	.86	63		●■▲◆	●		●	●	●	
Surrey Beige	.40	.86	43		◆	●		●	●	●	
Sierra Tan	.35	.86	37	LG	●			●	●	●	
Medium Bronze	.30	.87	31	LG	●■◆	●	●	●	●	●	●
Mansard Brown	.29	.86	29		●			●	●	●	
Dark Bronze	.26	.84	24	LG	●■▲◆	●	●	●■	●	●	●
Extra Dark Bronze	.05	.89	n/a		●			●		●	
Patina Green	.29	.87	29		●			●			
Hemlock Green	.28	.87	28		●						
Classic Green	.26	.84	24	LG	●■	●		●	●		
Hartford Green	.10	.82	2	LG	●			●		●	
Teal	.28	.87	28		●						
Regal Blue	.28	.86	27		●			●			
Slate Blue	.26	.85	24	LG	●			●			
Terra Cotta	.34	.87	36		●						
Banner Red	.42	.84	45		●			●			
Colonial Red	.34	.86	35	LG	●			●			
Brandywine	.26	.85	24		●			●			
Dove Grey	.49	.87	56		●			●■		●	
Slate Gray	.37	.86	39	LG	◆			●	●		
Charcoal	.32	.85	32		●	●		●	●	●	
Matte Black	.27	.86	26	LG	●	●		●	●	●	
Bright Silver	.60	.77	68		●			●■	●	●	
Silversmith	.53	.78	59		●			●			
Champagne	.37	.83	38		●			●			
Pewter	.36	.85	38		●			●			
Bright Copper	.49	.85	55	●	●■			●■			

PAINT PERFORMANCE PROPERTIES	HOT DIPPED GALVANIZED STEEL OR GALVALUME®	ALUMINUM
Accelerated Weathering ASTM D 4587 (Drew Cycle Weatherometer) ASTM G 23	Hours: 3,000 Total Chalk: Rating 8 Color: 5 Δ E Hunter units max Hours: 5,000 Total Chalk: Rating 8 Color: 5 Δ E Hunter units max	Hours: 3,000 Total Chalk: Rating 8 Color: 5 Δ E Hunter units max Hours: 5,000 Total Chalk: Rating 8 Color: 5 Δ E Hunter units max
Salt Spray ASTM B 117	Hours: 1,000 Total Scribe: Rating 7 1/16" (1.6mm) Field: Rating 10, no blisters	Hours: 3,000 Total Scribe: Rating 10, no creepage Field: Rating 10, no blisters
Humidity ASTM D 2247	Hours: 2,000 Total Rating: 10, no blisters	Hours: 3,000 Total Rating: 10, no blisters
Formability ASTM D 4145	0T-3T	0T-3T
ASTM D 522 (Elongation over 1/8" mandrel)	No cracking No loss of adhesion	No cracking No loss of adhesion
Pencil Hardness ASTM D 3363	HB-2H	HB-2H
Abrasion Resistance ASTM D 968	55-75 Liters of falling sand	55-75 Liters of falling sand
Specular Gloss ASTM D 523	20-35 at 60°	20-35 at 60°
Reverse Impact ASTM D 2794	2 x Metal thickness in inch-lbs. No loss of adhesion	1 1/2 x Metal thickness in inch-lbs. No loss of adhesion
Flame Test ASTM E 84	Class A rated coating	Class A rated coating

† Standard Coil Width is 48.25"
‡ Standard Coil Width is 44.375"
● Available in Standard Coil Width.
■ Available in 40.25" Coil Width.
▲ Available in 38" Coil Width.
◆ Available in 44.375" Coil Width.
LG Refer to website for reflective ratings

NOTES ON AVAILABILITY:

- 26ga, 24ga, .032", .040", .050" & .063" are standard 48.25" in width, 22ga & 18ga are 44.375" in width for painted items.
- Standard inventory is non-embossed. Please contact us for the availability of stucco embossing.
- Protective strippable film is available upon request.
- Mica colors are subject to premium pricing. Due to the unique effect of the Mica finishes, appearances may vary from batch to batch.
- Subject to change without notice.
- Unpainted, acrylic coated, Aluminum-Zinc Alloy steel (AZ-55) is maintained in: 26ga x 20", 26ga x 28", 26ga x 48.25", 24ga x 20", 24ga x 24", 24ga x 28", 24ga x 48.25", 22ga x 44.375", 22ga x 48.25", 20ga x 44.375" and 18ga x 44.375".
- All colors are supplied in Medium Gloss (20-35 at 60°). Low Gloss available subject to minimum coating run.

Fabral® standard architectural colors and finishes feature 70% polyvinylidene fluoride (PVDF) resin paint systems to ensure long term color retention and performance. Custom colors and finishes are also available. Minimum quantities and set up charges may apply.

