



PAC-CLAD®

P E T E R S E N

A **CARLISLE** COMPANY



FOREST GREEN



HARTFORD GREEN



▲★ MILITARY BLUE



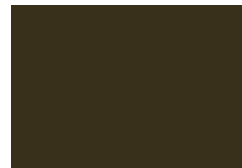
BERKSHIRE BLUE



▲★ SLATE BLUE



AWARD BLUE



▲ AGED BRONZE



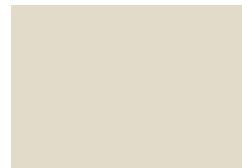
▲★ MEDIUM BRONZE



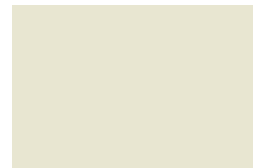
▲★ CARDINAL RED



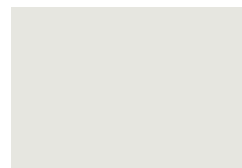
▲★ COLONIAL RED



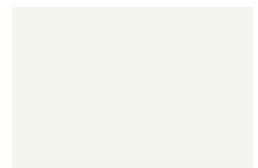
▲★ SANDSTONE



▲★ ALMOND



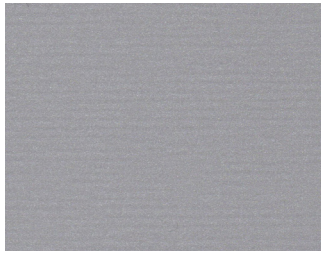
▲★ STONE WHITE



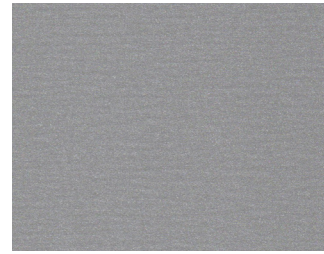
▲★ BONE WHITE

Color Guide

Premium Colors



●▲★\$ ANODIC CLEAR



●▲★\$\$ SILVERSMITH



●▲★\$ SILVER



●▲★\$ CHAMPAGNE



●▲★\$ ZINC



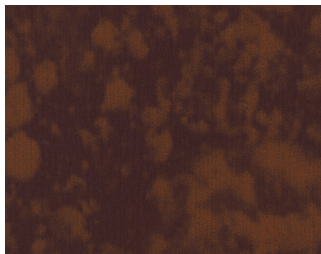
●▲★\$ WEATHERED ZINC



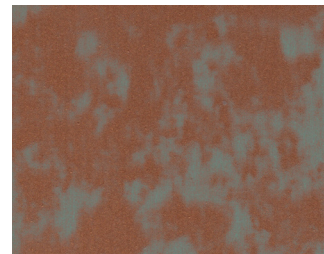
●▲★\$ COPPER PENNY



●▲★\$ AGED COPPER




●▲★\$ WEATHERED STEEL



●▲★\$ WEATHERED COPPER

Kynar 500® or Hylar 5000® pre-finished steel and aluminum for roofing, curtainwall and storefront applications.


● Metallic Colors
★ ENERGY STAR® Colors
\$ Pricing
▲ Cool Colors
👑 Premium Colors

See back for color availability chart.

Standard Colors



▲★ PATINA GREEN



▲★ TEAL



▲★ HEMLOCK GREEN



▲★ FOREST GREEN



▲★ HARTFORD GREEN



▲★ EVERGREEN



▲★ HUNTER GREEN



▲★ ARCADIA GREEN



▲★ MILITARY BLUE



▲★ BERKSHIRE BLUE



▲ GRAPHITE



▲★ CHARCOAL



▲★ INTERSTATE BLUE



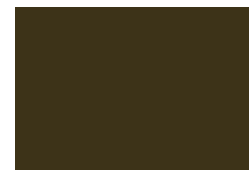
▲★ SLATE BLUE



▲★ AWARD BLUE



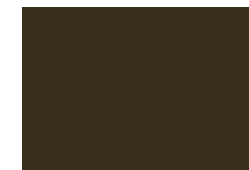
▲★ MATTE BLACK STEEL
▲★ BLACK ALUMINUM



▲★ DARK BRONZE



▲★ BURNISHED SLATE



▲★ AGED BRONZE



▲★ MEDIUM BRONZE



▲★ MANSARD BROWN



▲★ BURGUNDY



▲★ TERRA COTTA



▲★ CARDINAL RED



▲★ COLONIAL RED



▲★ MIDNIGHT BRONZE



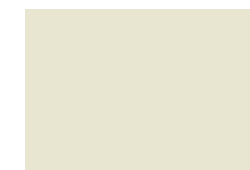
▲★ MUSKET GRAY



▲★ SIERRA TAN



▲★ SANDSTONE



▲★ ALMOND



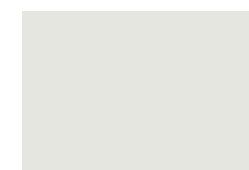
▲★ SLATE GRAY



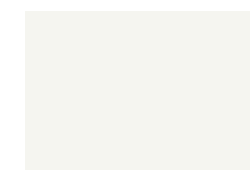
▲★ CITYSCAPE



▲★ GRANITE



▲★ STONE WHITE



▲★ BONE WHITE



Tri-State Metals
 41 North Lawn Avenue
 Elmsford, NY 10523
 Phone: 914-347-8157
www.tsmny.com

PAC-CLAD® Color Availability

| PAC-CLAD STANDARD COLORS | REFLECTIVITY | EMISSIVITY | 3 YEAR EXPOSURE | SRI | STEEL | | | ALUMINUM | | | 20-IN. COIL | | ENERGY STAR |
|----------------------------------------------|--------------|------------|-----------------|-----|--------|--------|------|----------|------|------|-------------|------|-------------|
| | | | | | 24 GA. | 22 GA. | .032 | .040 | .050 | .063 | 24 GA. | .032 | |
| AGED BRONZE | 0.29 | 0.87 | 0.27 | 29 | ✓ | | | | | | | | |
| ALMOND | 0.56 | 0.86 | 0.55 | 65 | ✓ | ✓ | ✓ | ✓ | ✓ | | ✓ | | ★ |
| ARCADIA GREEN | 0.29 | 0.87 | 0.29 | 29 | ✓ | | ✓ | | | | | | ★ |
| AWARD BLUE*** | 0.24 | 0.86 | 0.23 | 22 | ✓ | | ✓ | | ✓ | | | | |
| BERKSHIRE BLUE* | 0.30 | 0.87 | 0.27 | 31 | ✓ | | | | | | | | |
| BLACK ALUMINUM** | 0.04 | 0.89 | 0.04 | -2 | | | ✓ | ✓ | ✓ | ✓ | | | |
| BONE WHITE | 0.70 | 0.86 | 0.69 | 85 | ✓ | ✓ | ✓ | ✓ | ✓ | ✓ | ✓ | ✓ | ★ |
| BURGUNDY | 0.14 | 0.85 | 0.13 | 9 | ✓ | | ✓ | | ✓ | | | | |
| BURNISHED SLATE | 0.32 | 0.87 | 0.31 | 33 | ✓ | | | | | | | | |
| CARDINAL RED*** | 0.44 | 0.86 | 0.44 | 49 | ✓ | | ✓ | | ✓ | | | | ★ |
| CHARCOAL | 0.30 | 0.86 | 0.30 | 30 | ✓ | | ✓ | | ✓ | | ✓ | ✓ | ★ |
| CITYSCAPE | 0.49 | 0.86 | 0.50 | 56 | ✓ | ✓ | ✓ | ✓ | ✓ | | ✓ | ✓ | ★ |
| COLONIAL RED | 0.31 | 0.86 | 0.31 | 31 | ✓ | | ✓ | ✓ | ✓ | | | | ★ |
| DARK BRONZE | 0.29 | 0.86 | 0.29 | 29 | ✓ | ✓ | ✓ | ✓ | ✓ | ✓ | ✓ | ✓ | ★ |
| EVERGREEN | 0.28 | 0.86 | 0.26 | 27 | ✓ | | ✓ | | | | | | ★ |
| FOREST GREEN | 0.10 | 0.86 | 0.10 | 4 | ✓ | ✓ | ✓ | ✓ | ✓ | | | | |
| GRANITE* | 0.33 | 0.87 | 0.33 | 34 | ✓ | ✓ | ✓ | ✓ | ✓ | | | | ★ |
| GRAPHITE | 0.29 | 0.87 | 0.28 | 29 | ✓ | | | | | | | | |
| HARTFORD GREEN | 0.08 | 0.88 | 0.08 | 3 | ✓ | | ✓ | ✓ | ✓ | | | | |
| HEMLOCK GREEN | 0.31 | 0.87 | 0.30 | 32 | ✓ | | ✓ | | ✓ | | | | ★ |
| HUNTER GREEN | 0.28 | 0.86 | 0.27 | 27 | ✓ | | ✓ | | | | | | ★ |
| INTERSTATE BLUE | 0.16 | 0.87 | 0.15 | 12 | ✓ | | ✓ | | ✓ | | | | |
| MANSARD BROWN | 0.31 | 0.86 | 0.31 | 31 | ✓ | ✓ | ✓ | ✓ | ✓ | | | | ★ |
| MATTE BLACK STEEL** | 0.26 | 0.86 | 0.25 | 25 | ✓ | ✓ | | | | | ✓ | | |
| MEDIUM BRONZE | 0.30 | 0.87 | 0.29 | 31 | ✓ | ✓ | ✓ | ✓ | ✓ | ✓ | ✓ | ✓ | ★ |
| MIDNIGHT BRONZE | 0.06 | 0.87 | 0.06 | 0 | ✓ | | | ✓ | | | | | |
| MILITARY BLUE | 0.31 | 0.86 | 0.30 | 31 | ✓ | | ✓ | | | | | | ★ |
| MUSKET GRAY | 0.32 | 0.86 | 0.31 | 33 | ✓ | ✓ | ✓ | | ✓ | | | | ★ |
| PATINA GREEN | 0.33 | 0.86 | 0.32 | 34 | ✓ | | ✓ | | | | | | ★ |
| SANDSTONE | 0.48 | 0.86 | 0.48 | 54 | ✓ | ✓ | ✓ | ✓ | ✓ | ✓ | ✓ | ✓ | ★ |
| SIERRA TAN | 0.32 | 0.82 | 0.31 | 31 | ✓ | ✓ | ✓ | ✓ | ✓ | | ✓ | ✓ | ★ |
| SLATE BLUE | 0.28 | 0.86 | 0.27 | 27 | ✓ | | ✓ | | | | | | ★ |
| SLATE GRAY | 0.38 | 0.86 | 0.37 | 41 | ✓ | ✓ | ✓ | ✓ | ✓ | | ✓ | ✓ | ★ |
| STONE WHITE | 0.69 | 0.86 | 0.67 | 84 | ✓ | ✓ | ✓ | ✓ | ✓ | ✓ | ✓ | ✓ | ★ |
| TEAL | 0.32 | 0.86 | 0.32 | 33 | ✓ | | ✓ | | | | | | ★ |
| TERRA COTTA | 0.34 | 0.87 | 0.33 | 36 | ✓ | | ✓ | | ✓ | | ✓ | ✓ | ★ |
| PAC-CLAD PREMIUM COLORS | | | | | | | | | | | | | |
| AGED COPPER | 0.55 | 0.80 | 0.53 | 62 | ✓ | | ✓ | | | | | | ★ |
| ANODIC CLEAR | 0.32 | 0.83 | 0.31 | 31 | | | | ✓ | | | | | |
| CHAMPAGNE | 0.50 | 0.85 | 0.49 | 57 | ✓ | | ✓ | ✓ | ✓ | | | | ★ |
| COPPER PENNY | 0.52 | 0.81 | 0.52 | 58 | ✓ | | ✓ | ✓ | ✓ | | ✓ | | ★ |
| SILVER | 0.47 | 0.87 | 0.46 | 53 | ✓ | ✓ | ✓ | ✓ | ✓ | | ✓ | ✓ | ★ |
| SILVERSMITH | 0.32 | 0.88 | 0.32 | 34 | | | | ✓ | | | | | |
| WEATHERED COPPER | 0.45 | 0.88 | N/A | 51 | ✓ | | | | | | | | |
| WEATHERED STEEL | 0.32 | 0.89 | N/A | 34 | ✓ | | | | | | | | |
| WEATHERED ZINC | 0.48 | 0.82 | 0.46 | 53 | ✓ | ✓ | ✓ | | ✓ | | | | ★ |
| ZINC | 0.42 | 0.82 | 0.38 | 45 | ✓ | | ✓ | ✓ | ✓ | | | | ★ |
| CLEAR-COAT ACRYLIC FINISH (NON-KYNAR) | | | | | | | | | | | | | |
| GALVALUME PLUS | 0.68 | 0.14 | 0.55 | 57 | ✓ | ✓ | | | | | ✓ | | ★ |

PAC-CLAD Premium finishes are available from stock at a moderate extra cost. PAC-CLAD Copper Penny is a Non-Weathering finish. Solar Reflectance Index calculated according to ASTM E-1980.

*Low Gloss/Low Sheen, 70% PVDF finish ** Appearance differs for Black Aluminum and Matte Black Steel *** 10-year finish warranty

ENERGY STAR PERFORMANCE CRITERIA:

Emissivity uses ASTM C1371 Reflectivity uses ASTM C1549.

TECHNICAL DATA FOR KYNAR 500/HYLAR 5000 COATING:

- ▶ South Florida Exposure: Color (ASTM D 2244) - No more than 5ΔE Hunter units at 20 years; Chalk (ASTM D 4214) - Rating no less than 8 at 20 years; Film integrity - 20 years.
- ▶ Accelerated Weathering (ASTM D 4587, ASTM G 154): 5000 Hours; Chalk, per ASTM D 4214, rating of 6 or better; Color, per ASTM D 2244, < 5ΔE (Hunter Units) color change.

- ▶ Humidity Resistance (ASTM D 2247): Galvalume or HDG, 100% RH, 2000 hours - No field blisters; Aluminum, 100% RH, 3000 hours - No field blisters
- ▶ Salt Spray Resistance (ASTM B 117): Aluminum, 3000 hours, Galvalume or HDG, 1000 hours - Creep from scribe no more than 1/16", no field blisters
- ▶ Chemical/Acid Pollution Resistance (ASTM D 1308): Pass
- ▶ T-Bend (ASTM D 4145): 1T - 3T with no loss of adhesion
- ▶ Pencil hardness (ASTM D 3363): HB - 2H
- ▶ Specular Gloss (ASTM D 523) @ 60 degrees: Typical - 20 - 35

- ▶ Abrasion Resistance (ASTM D 968): 67 +/- 10 liters
- ▶ Cross Hatch Adhesion (ASTM D 3359): No loss of adhesion
- ▶ Reverse Impact (ASTM D 2794): Galvalume or HDG, 2x metal thickness inch-pounds, no loss of adhesion; Aluminum, 1.5x metal thickness inch-pounds, no loss of adhesion
- ▶ Flame Test (ASTM E 84): Class A Coating